

D2 series



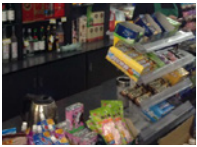
Your Best Choice in small footprint direct-thermal printer



Best Label-saving Protocol!



Before



Working bench has no luxury room for bulky printer so things are all cramped together.

After



Compact design of D2 fits nicely on your working bench and makes your work a pleasant experience.

Application



Healthcare



Ticket



Retail



Feature-rich to make daily work simple and easy



Clamshell design, easy load

The D2 series features a user-friendly clamshell design that allows users to simply open the cover and loading ribbon and media.



Up to 7-inch per second Printing Speed

Featuring 7-ips printing speed. No compromised printing quality even run at the maximum speed.



Seamless-converting to Argox printers!

Automatic Language Emulation Detection

Automatic adopting commonly used printer control languages for maximized user friendliness. (Auto-Detection & Auto-Conversion)



Enhanced connectivity

The D2 series has built-in USB host, USB device, and it can be expanded with Ethernet/RS232, Wi-Fi, Bluetooth.

*Sales representative for demonstration video.

| Print Specifications | D2-250 | D2-350 |
|---|---|----------------------|
| Printing Method | Direct Thermal | |
| Printing Resolution | 203 dpi (8 dots/mm) | 300 dpi (12 dots/mm) |
| Printing Speed | Max. 7 ips | Max. 5 ips |
| Printing Length | Max. 100"(2540 mm) | Max. 50"(1270 mm) |
| Printing Width | Max. 2.13"(54 mm) | Max. 2.24"(56.9 mm) |
| Memory | 32 MB SDRAM, 16MB Flash ROM (USB storage up to 32GB) | |
| CPU Type | 32 bit RISC microprocessor | |
| Consumables Specifications | | |
| Sensors | Reflective sensor x 1 (movable) & Transmissive sensor x 1 (fixed, 6.27mm offset) | |
| Media Type | Roll-feed, die-cut, continuous, fan-fold, black mark, tags, ticket in thermal paper or plain paper | |
| Media | Max. width 60mm. Min. width 12mm. Media thickness: 0.06~0.2mm 5"(127mm) OD on a 1"/1.5" (25.4/38 mm) ID core; 4.5"(114mm) OD on a 0.5" (12.7mm) ID core | |
| Fonts & Symbologies | | |
| Fonts | Internal character sets standard 5 alpha-numeric fonts from 0.049"H ~ 0.23" H (1.25mm ~ 6.0mm) Internal fonts are expandable up to 24x24 4 direction 0 ~ 270 rotation Soft fonts are downloadable Ability to print any Windows True Type font easily. Support scalable font | |
| 1D Barcodes | UPC-A, UPC-E, JAN/EAN, CODE39, CODE93, CODE128, GS1-128 (UCC/EAN128), CODABAR (NW-7), ITF, Industrial 2of5, MSI, UPCadd-on code, POSTNET, GS1 DataBar Omnidirectional, GS1 DataBar Truncated, GS1 DataBar Stacked, GS1 DataBar Stacked Omnidirectional, GS1DataBar Limited, GS1 DataBar Expanded, GS1DataBar Expanded Stacked | |
| 2D Barcodes | QR Code, PDF417 (including MicroPDF), DataMatrix (ECC200), GS1 DataMatrix, MaxiCode | |
| Graphics | PPLA: PCX, BMP, IMG, HEX,GDI PPLB: PCX, BMP, Binary raster, GDI PPLZ: GRF, Hex, GDI | |
| Emulation | PPLA, PPLB, PPLZ | |
| Interface Characteristics and Integration | | |
| Operation Interface | LED Indicator x 2, Button(Feed) x 1 | |
| Communication Interface | USB device, USB host | |
| Drivers | Windows Driver for Vista/Win7/Win8/Win10, LINUX Driver, macOS Driver, Raspberry Pi Driver | |
| Software | BarTender, Printer Tool | |
| Database Link | Argobar Pro support ODBC Database Connection: Excel, CSV, MS Access, MS SQL, Oracle MySQL, dBASE (*.dbf) | |
| Operating & Environment Characteristics | | |
| Power Source | Universal Switching Power supply. AC input voltage: 100~240V, 50~60Hz. DC Output: 24V, 2.5A | |
| Operation Environment | Operation Temperature: 41°F~104°F (5°C~40°C), 0% ~ 90% non-condensing, Storage Temperature: -4°F~122°F (-20°C~50°C) | |
| Agency Listing | CE, FCC, cTUVus, Energy Star, CCC, RoHS, BSMI, RCM, CB, BIS | |
| Physical Characteristics | | |
| Printer Dimensions | W 116mm x H 170mm x D 215mm | |
| Printer Weight | 2.31 lbs (1.05 kg) | |

*Argox reserves the right to enhance and modify the specification without prior notice.
Please check Argox sales representative for most updated specifications.

Optional Items



Full/partial cutter, guillotine-type



Peeler



WLAN



Bluetooth



RS-232



Ethernet



ACRC
ARGOX Certified Repair Centers

Consult your local Argox business partners for location and contacts.

