

## Specifications

### System Configuration

	G-615S	G-715S	G-715SR
CPU	Intel® Celeron® J1900 up to 2.4GHz (Quad-core)	Intel® Celeron® 2.2 GHz Intel® Core™ i3 3.1GHz	Intel® Celeron® 2.2 GHz Intel® Core™ i3 3.1GHz
Main memory		Intel® Core™ i5 2.0GHz	Intel® Core™ i5 2.0GHz
O/S compatibility	204Pin DDR3L RAM*2 slot, max. 8GB	204Pin DDR3L RAM*2 slots, max. 16GB	204Pin DDR3L RAM*2 slots, max. 16GB
Remote Management	n/a	optional	Intel® Active Management Technology
RAID Function	n/a	optional	
O/S Compatibility	Windows 7/POSReady 7/ Windows 8.1 Industry / Windows 10 IoT Enterprise/Linux Kernel 3.0 or above		

### I/O Connectivity

	G-615S	G-715S	G-715SR
Parallel	optional, cable output		
USB2.0	3	3	4
USB3.0	1	2	2
12V Powered USB			2
24V Powered USB			1
eSATAp/USB2.0 combo	1	1	1
RJ45 COM	4	3	4
Gigabit Ethernet	1	1	1
PS/2 Keyboard	1	1	1
VGA	1	1	1
HDMI	Reserved	1	1
RJ12 Cash Drawer	1	1	1
	*OPOS Driver, Dual Cash Drawer Support		
12V DC out	1	1	1
DC in	1	1	1

### LCD Panel

15" LED-backlit display  
Bezel-free Resistive Touch  
Projected Capacitive Touch  
Projected Capacitive Touch with anti-glare treatment (option)

### Storage Options

1 x 2.5" SATA HDD or 1 x 2.5" SSD  
Dual disk drives (option)  
mSATA(option)

### Power Supply

External DC Power adapter. AC100 to 240V full range.

### Optional attachments

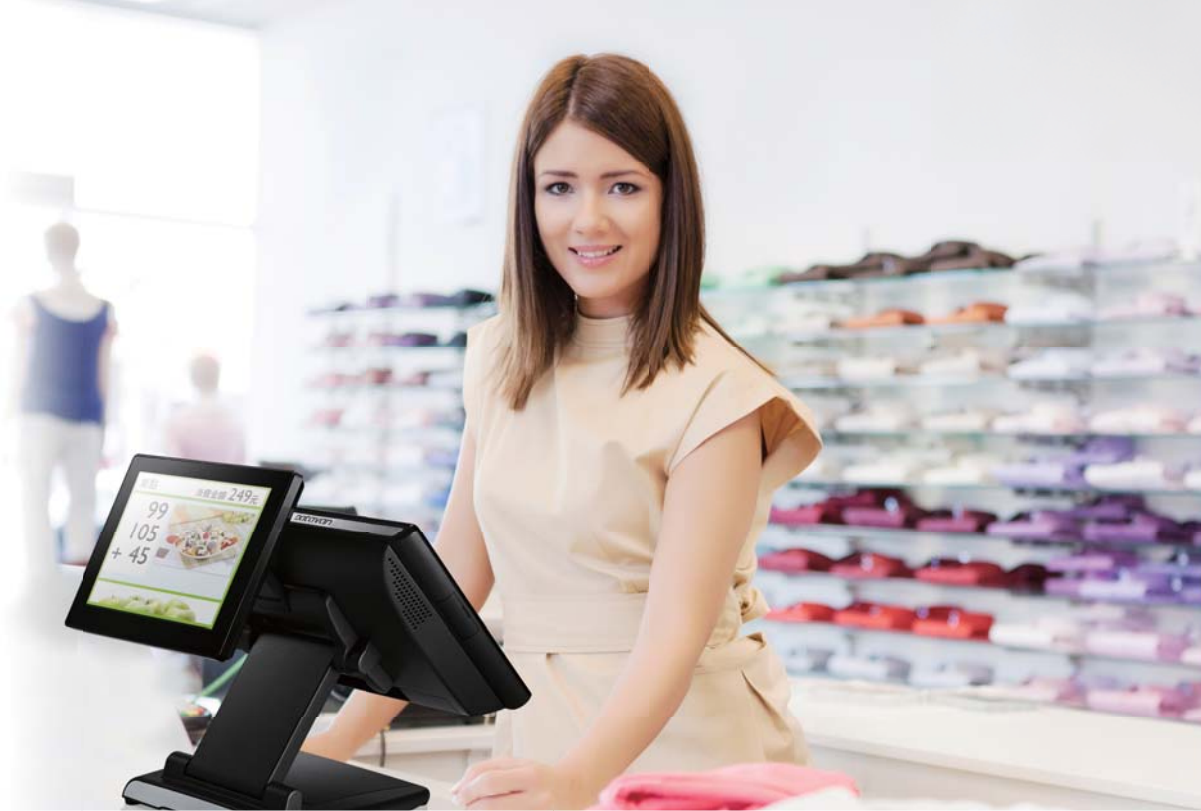
MSR & iButton identification reader (2-in-1)  
Fingerprint/RFID/NFC identification reader  
LCM/VFD customer display  
8"/10"/15" 2nd LCD display



# Glamor Series

The leading-edge POS terminal takes performance, style and technology to a whole new level.





## Slim, style and smart

The patented dual-hinge engineering design lets you easily position the touchscreen to different height and tilt angle. Put it upright, low-profile or lay it flat, perfect fit variety of hospitality and retail applications.



Reduce 50%  
Package size



Dual hinge



Fold-flat

Low-profile

Upright

## Adding flexibility to meet mission critical needs

- Retail I / O ports(G-715SR)
- Powered USB



- Easy access 2<sup>nd</sup> hard drives (w/ RAID support)



- UPS unit



- Front loading printer integration



## Unmatched reliability

- Rugged aluminum die-cast housing
- Flat screen with sealed housing - provide high level of ingress protection (IP65 front)
- Proven thermal solution



NO FAN



WATER  
DUST PROOF

## Improved serviceability

The modular engineering incorporating with **cord-free** technique makes service and upgrade easily and hassle-free.



CORDLESS



EASY SERVICE



LCM/VFD  
Customer  
Display

8"/10"/15"  
2<sup>nd</sup> LCD  
Display

## Intelligent performance

Backed by Intel® platform technology, Glamor provides intelligent computing power, from energy-efficient SoC platform to powerful desktop platform. Support all types of business operation and meet your application needs.

- Energy-efficient computing solution  
Intel® Celeron® J1900 CPU



- 4th gen Intel desktop computing solution  
Intel® Celeron® 2.2 GHz CPU  
Intel® Core™ i3 3.1GHz  
Intel® Core™ i5 2.0GHz

